

# INCLINATOR® DUMBWAITERS

*Commercial grade to home use*





# Dumbwaiter

Inclinator's innovation and reliability can be found in our line of Dumbwaiters for homes, offices, medical practices, stores, restaurants, banks, libraries and many other applications.

**Reduce the risk of back strain, aching muscles and even accidents.**

Stop carrying heavy or bulky items up and down stairs and install an Inclinator Dumbwaiter. For businesses, a Workers' Comp claim could easily exceed the cost of a Dumbwaiter.

**Built to perform ... and last.**

Inclinator is known for providing custom lift solutions, so give us your requirements – however unique they may be – and we'll deliver an ideal design. Besides functionality, Inclinator Dumbwaiters feature solid construction and proven reliability.

Meets or exceeds the requirements of ASME A17.1-2007 and CSA B44-07 safety codes for elevators and escalators.

**For commercial use**

- Custom sizes up to 36" x 36" x 48"
- 200, 300 and 500 lb. capacity models
- Can be installed at counter or floor level
- Travel up to 27' on 200 lb. model
- Travel up to 47' on 300 and 500 lb. models
- Automatic controls from any floor
- Can accommodate openings on 1, 2 or 3 sides
- Up to 6 stops
- Hoistway door options include slide-up, bi-parting and swing (machine access door is always swing)
- Car gate options include bi-parting, slide-up and collapsible where allowed by code
- Painted steel or optional stainless steel
- 220V electrical with flexible power unit location
- Rolled steel rail mounted to 2" x 12" plank
- Energy-efficient cable drum drive
- Broken cable safety device and slack cable disconnect
- Meets all code requirements for safety
- Fire-rated door options available
- Knock-down construction standard
- 2-year warranty



**Door Options**



**Hoistway Door**  
Bi-Parting, Slide-Up or Swing Door: Available in Stainless Steel and Primed Carbon Steel

**Machine Access Door**  
Available in Stainless Steel or Primed Carbon Steel

**Gate Options**



**Bi-Parting or Slide-Up Gate**  
Available in Stainless Steel and Primed Carbon Steel

**Call Buttons**



Above control station only available with bi-parting and slide-up doors.

**Safety Options**



Car cam and roller position shut-off switch meets all industry codes as a dumbwaiter door safety interlock.

Key lock and door open shut-off switch meet all industry codes for a machine room access door interlock.

# Homewaiter®

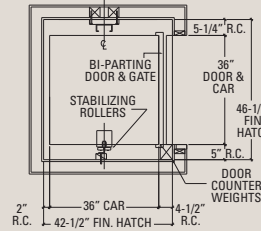
## For residential use

- Custom sizes up to 24" x 24" x 24"
- 120 lb. capacity
- Maximum travel distance of 35 ft.
- Can be installed at counter or floor level
- Up to 4 stops
- Automatic controls from any floor
- Can accommodate openings on 1, 2 or 3 sides
- Collapsible car gate
- Painted steel standard
- Stainless steel or hardwood veneer car optional
- Operates on standard 120V house current
- Extruded aluminum rail with uni-strut mounting system
- Energy-efficient cable drum drive
- Broken cable safety device and slack cable disconnect
- Knock-down construction optional
- 2-year warranty

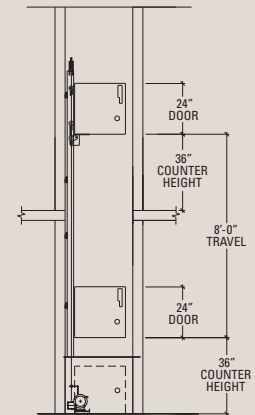
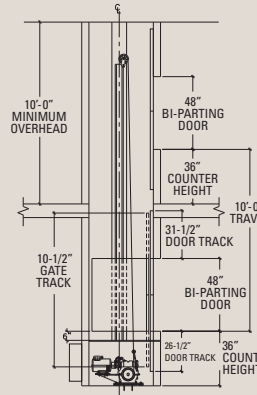
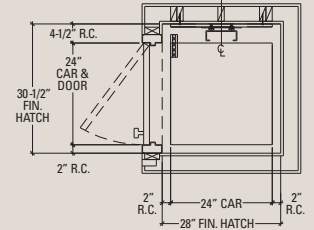


## Rail and Drive Details

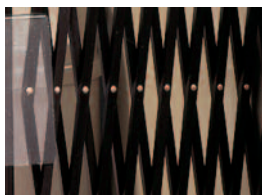
### Dumbwaiter



### Homewaiter®



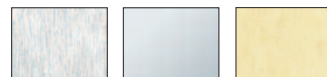
## Collapsible Gate Finishes



Silver    Brass    Bronze

Oil-Rubbed Bronze    Duranotic

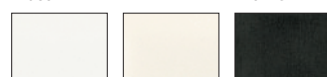
## Call Button Finishes



Brushed Stainless    Polished Stainless    Brushed Brass



Polished Brass    Bronze    Oil-Rubbed Bronze



White Kydex    Almond Kydex    Black Kydex



Shown with standard call buttons



Shown with optional "arrival" light

Actual colors may vary slightly from printed samples.



*You can be confident in choosing an Inclinotor product*



### HOME ELEVATORS

- The industry's most customizable home elevator
- Two lines: LX and ELEVETTE®



### WHEELCHAIR LIFTS

- Indoor and outdoor use
- Inclinotor® VL



### DUMBWAITERS

- Custom sizes and features
- Two lines: Dumbwaiter (commercial use) and Homewaiter® (residential use)

Consult your local building authorities for specific regulations on these products before purchasing. Specifications, material finishes and product options are subject to change without notice.



601 Gibson Boulevard  
Harrisburg, PA 17104  
Phone: 717-939-8420  
**Toll-Free: 800-343-9007**  
**www.inclinotor.com**  
isales@inclinotor.com

©2011, Inclinotor Company of America  
PO Box 1557, Harrisburg, PA 17105-1557  
Printed in USA, All Rights Reserved

29305355 • SPCTM-1M-413