

ORDER REFERENCE

PROJECT: HOMEWAITER 120#
 MACHINE BELOW

TYPICAL DRAWING FOR REFERENCE ONLY.
 NOT TO BE USED FOR CONSTRUCTION

SPECIFICATIONS

MODEL: HOMEWAITER (COLLAPSIBLE GATE W/SWING TYPE DOOR)

LANDINGS: 2

CODE(S): 1

CAPACITY: 120

SPEED: 28 F.P.M.

SUSPENSION 1 WIRE ROPE:
 MEANS: 5/32 AIRCRAFT CABLE

CAR CONSTRUCTION: AVAILABLE IN STAINLESS STEEL,
 PAINTED STEEL OR HARDWOOD VENEER

NOTE: ALL MANUFACTURER SUPPLIED CAR AND EQUIPMENT OPTIONS ARE
 NOTED ON THE CONFIRMING ORDER SHEET.

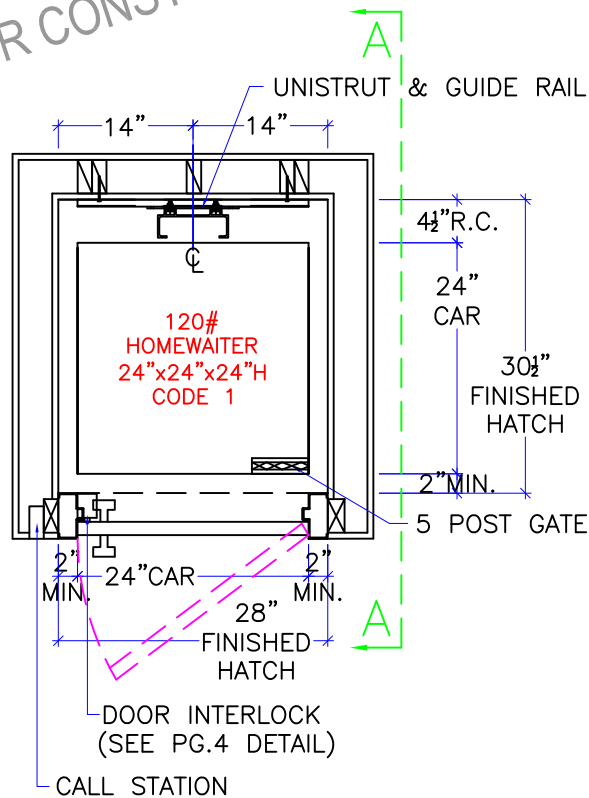
DISCLAIMER: ONCE DRAWINGS HAVE BEEN APPROVED,
 SIGNED AND WITHIN 5 DAYS OF PRODUCTION, THE
 CUSTOMER WILL BEAR ALL RESPONSIBILITY AND LIABILITY
 OF FINISHED UNIT.

TYPICAL DRAWING
 NOT TO BE USED FOR CONSTRUCTION

DWG VIEW		PART NUMBER		REV. DATE	
COVER SHEET		TYPICAL		-	
DRAWING TITLE		DRAWING NO.		-	
HW120 CODE 1 - MR BELOW		HW-002		-	
PAGE:	DRAWN BY:	DWG. DATE	JOB OR APP.#	DEALER P.O.#	DWG. SCALE
1/4	J PETTYJOHN	11/20/15	-	-	1:24
					REV. LEVEL(1-3)
					-



TYPICAL DRAWING
NOT TO BE USED FOR CONSTRUCTION



SEE "LOAD CAPACITY CALCULATOR"
FOR OTHER POSSIBLE
HW 120# CAB DIMENSIONS

NOTE:
ALL HOISTWAY CONSTRUCTION MUST COMPLY WITH NATIONAL, STATE,
AND LOCAL CODES. HOISTWAY MUST BE PLUMB AND STRAIGHT
FROM TOP TO BOTTOM WITH NO PROJECTIONS INTO THE HOISTWAY.

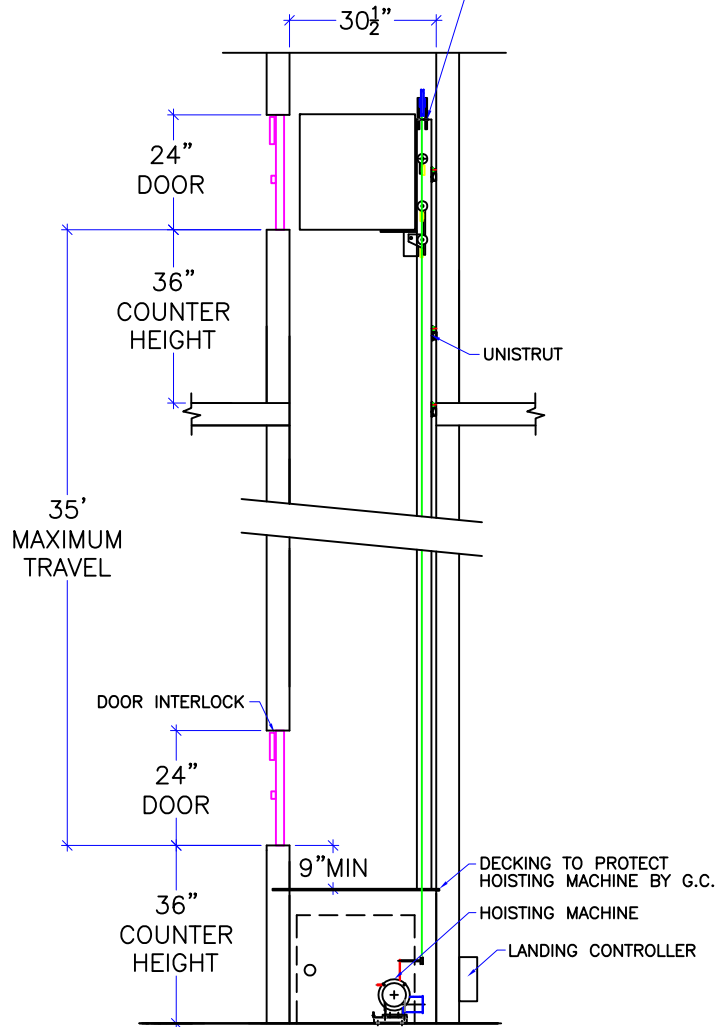
NOTICE TO ELECTRICAL CONTRACTOR:

- ALL ELECTRICAL WIRING MUST BE DONE BY A JOURNEYMAN MECHANIC AND MUST MEET ALL NATIONAL, STATE, AND LOCAL CODES.
- BRING (2) #12 W/GND FROM RESIDENCE INCOMING POWER PANEL 20AMP GFI BREAKER(120V, NEUTRAL, GROUND)TO THE MACHINE ROOM
- REQUIRED LOW VOTAGE WIRING IS SUPPLIED BY MANUFACTURER. ALL EXTENSIONS ADDITIONS, ETC. SHALL BE DONE WITH THE SAME SIZE AND TYPE OF WIRE AS ORIGINALLY SUPPLIED BY THE MANUFACTURER.
- ALL MEANS FOR ACCESS TO EQUIPMENT SHALL BE PROVIDED WITH A LOCK. ALL SHAFT DOORS MUST BE INTERLOCKED.

DWG VIEW HOISTWAY LAYOUT		PART NUMBER TYPICAL		REV.DATE	
DRAWING TITLE HW120 CODE 1 - MR BELOW		DRAWING NO. HW-002		-	
PAGE: 2/4	DRAWN BY: J PETTYJOHN	DWG. DATE 11/20/15	JOB OR APP.# -	DEALER P.O.# -	DWG. SCALE 1:24
					REV.LEVEL(1-3) -



MINIMUM OVERHEAD NOTE:
OVERHEAD MAY BE REDUCED TO MINIMUM
OF 4" ABOVE TOP OF CAR BY LOWERING
SHEAVE ON RAIL.



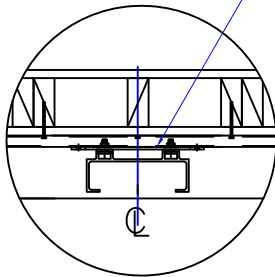
MACHINE ROOM CAN
BE LOCATED ABOVE
OR BELOW HOISTWAY

TYPICAL DRAWING
NOT TO BE USED FOR CONSTRUCTION

DWG VIEW		SECTION A-A		PART NUMBER		REV. DATE	
				TYPICAL		-	
DRAWING TITLE		DRAWING NO.				-	
HW120 CODE 1 - MR BELOW		HW-002				-	
PAGE:	DRAWN BY:	DWG. DATE	JOB OR APP.#	DEALER P.O.#	DWG. SCALE	REV. LEVEL(1-3)	
3/4	J. PETTYJOHN	11/20/15	-	-	1:24	-	



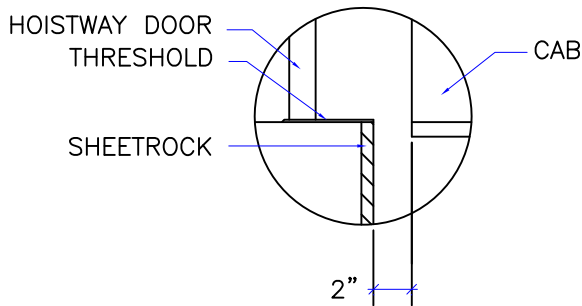
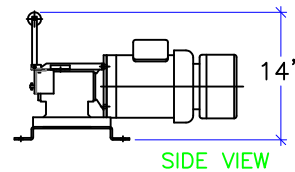
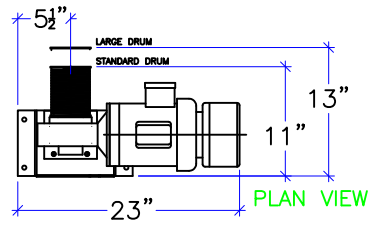
UNISTRUT AND
GUIDE RAIL



UNISTRUT WIDTH SHALL BE
EQUAL TO WIDTH OF CAR.

RAIL DETAIL

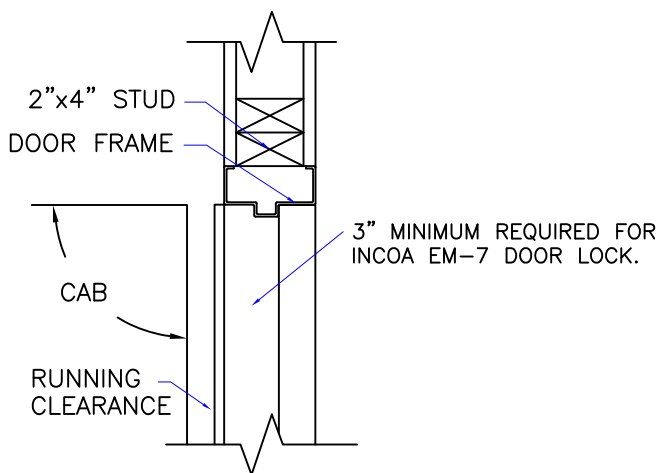
SEE "LOAD CAPACITY CALCULATOR"
FOR OTHER POSSIBLE
HW 120# CAB DIMENSIONS



DOOR SILLS TO BE INSTALLED BY G.C.
AFTER LIFT SUPPLIER HAS INSTALLED
A RUNNING PLATFORM.

SILL DETAIL

1. MACHINE ROOM SIZE REQUIREMENTS
MAY CHANGE WITH TRAVEL DISTANCE
2. MACHINE ROOM CAN BE LOCATED
ABOVE OR BELOW HOISTWAY
3. SHEAVE COMBINATIONS
WILL CHANGE WITH ALTERNATE
MACHINE ROOM LOCATIONS



DOOR FRAME DETAIL

RAIL FORCES:

78 LBS. PULL OUT
400 LBS. (STATIC) VERTICAL LOAD
800 LBS. (IMPACT) VERTICAL LOAD

REACTIONS ON DIRECTIONAL SHEAVES:

200 LBS. (STATIC)
400 LBS. (IMPACT)

MAXIMUM PULLOUT FORCE ON GEARBOX ANCHOR: 281 LBS.

TECHNICAL DATA

DWG VIEW

DETAILS, DATA, CODES

PART NUMBER

TYPICAL

REV.DATE

DRAWING TITLE

HW120 CODE 1 - MR BELOW

DRAWING NO.

HW-002

-

-

-

PAGE:
4/4

DRAWN BY:
J PETTYJOHN

DWG. DATE
11/20/15

JOB OR APP.#
-

DEALER P.O.#
-

DWG. SCALE
1:24

REV.LEVEL(1-3)
-