

INCLINATOR® ELEVETTE® | HOME ELEVATORS

From simple accessibility to distinctive elegance.



INCLINATOR.COM



- **Reliable Performance**
- **Near Endless Design Possibilities**
- **Best Name In The Industry**

Elevette® Home Elevators

Beautifully designed and masterfully engineered.



Homeowners appreciate Inclinor Elevette's beauty and reliable performance. Architects love the near endless design possibilities. Every Inclinor product is skillfully hand-made and finished one-at-a-time, making customization possible. Inclinor is the best name in the industry because we build the best home elevator and back it with valuable technical support and exceptional customer service. The same strong service reputation we have built in the United States for more than 90 years is also available in other countries through selected professional and expert dealers.

Add to an existing home or include in new construction. A home elevator only takes up the space of a standard closet. The cab can be placed in an elevator shaft or in no shaft. Shafts can be inside the home or outside.

Different than a commercial elevator.

Home elevators are smaller than commercial elevators. Typically, a home elevator can accommodate three or four adults or two people with one in a wheelchair. Floor size can be up to 18 sq. ft. (1.67 sq. meters) – where allowable by code. 500-lb. (226 kg), 950-lb. (430kg) and 1,000-lb (453 kg) weight capacities are available. They are usually designed to complement or replicate the home's interior or a homeowner's custom elements.



LED ceiling lights



Lots of custom possibilities, like a sloped ceiling to accommodate home's design



Cab Operating Panel, with Hall Station at each landing's door



Wood or metal handrail



Collapsible or accordion fold gate(s)



Many wood species or laminate choices for walls, floor, ceiling and accessory elements



Four drive systems: Cable Drum, Hydraulic, MRL Overhead Cable Drum and MRL Geared

Very low energy consumption
A year of standard use equals about two weeks of a washing machine's use.

Inclinator's origin of caring is our guiding principle today.

C.C. Crispin Motor Car Company was a successful Cadillac dealership (Pennsylvania's first) in 1923 when Mr. Crispin, an inventive entrepreneur, got an idea for a moveable seat traveling up and down stairs while he was visiting a convalescing neighbor confined to an upstairs bed. Within a few days, he formalized his idea and began U.S. Patent procedures. A self-taught mechanical engineer, Crispin developed a folding wooden chair and footrest that moved on rollers up and down a steel rail fastened to stairs using regular house electric to operate the motor. It was narrow enough that people could still use the stairs by foot. He called it the "Inclin-ator" to convey the thought of an elevator working on an incline of stairs.



In 1924, the Philadelphia Electric Company invited Mr. Crispin to display the Inclin-ator in its showroom ... helping his idea become a company. Soon after, Westinghouse Electric saw the unique product and had one installed at its Electric Home on Atlantic City's Boardwalk.



In 1928, Mr. Crispin designed the first residential electric elevator as an alternative for homes with winding staircases. He named it "Elevette." Inclinator later added vertical platform wheelchair lifts and dumbwaiters to its product line.

Even after 90 years, Inclinator remains a family-owned business. All of our products are crafted in our South Central Pennsylvania USA shop and shipped to your dealer for installation.

For generations, Inclinator has been helping families improve their quality of life.

Not having to walk stairs makes living in your home easier. It gives people in wheelchairs, those needing walkers or people just having difficulty climbing stairs the ease of accessing every floor of their house ... giving them more years in the home they love ... with the people they love.



INCLINATOR.COM

**Inclinator elevator designed and built to match
the home's custom cabinetry style and finish.**

(custom cab shown)

Choose a standard model or design a one-of-a-kind elevator.

Inclinor's Elevette® is available in five standard cab styles, four drive system types, many door configurations and the most custom features and accessory options. Elevette can be placed in an interior or exterior elevator shaft or in no shaft . . . running up the center of open winding stairs, next to stairways and where no stairs exist.

Elevette has more standard features and custom options than any other home elevator brand.

- Custom cab sizes up to 18 sq. ft. (1.67 sq. meters) where allowed by code
- Gate or door openings on 1, 2 or 3 sides
- Nearly all wood species available
- Stained or painted in factory or on site
- Commercial-grade laminate flooring with simulated wood grain finish
- Unfinished oak veneer flooring available to accommodate on-site flooring
- Collapsible or accordion fold gate(s)
- Automatic gate and door operators available
- Two LED ceiling lights standard
- Flat wood handrail standard (round metal available)
- Cab Operating Panel in elevator, Hall Station at each landing
- Custom accessories and finishing available



500 Cab

Powder-coated extruded aluminum frame with acrylic panels that provide a panoramic view when used in an open environment or glimpses of the home's interior or outdoors when placed in a shaft with windows.



400 Cab

Solid wood with hardwood veneer raised or recessed panels in 1-over-1 or 2-over-2 configuration. This cab complements a traditional or transitional home style. Customize to match a home's cabinetry. (shown with two additional LED lights)

Walls

Just about any wood species available can be used for 400, 300 and 200 Cabs. The majority of cabs are made using hardwoods and veneers in one of our popular woods – available in semi-gloss coat or satin finish. Other premium, exotic woods can be used. Most cabs are finished in the factory, but they can remain unfinished for on-site, custom finishing.



Maple



Red Oak



Cherry



Mahogany



Medium Oak



Dark Oak

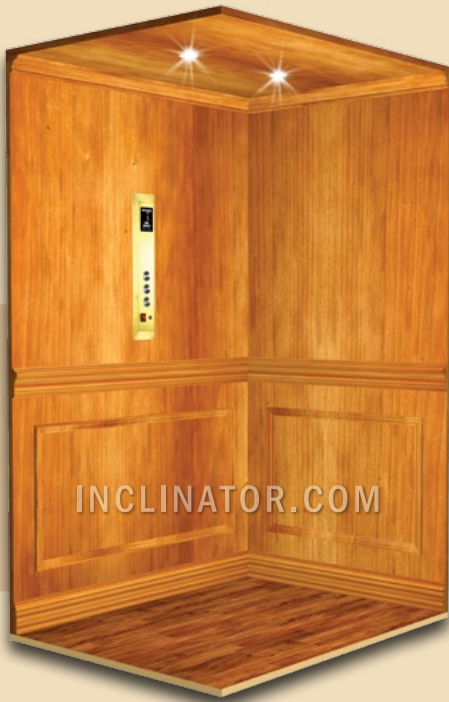


Walnut



Clear Alder

Superior engineering allows Inclinator to place a deeper and wider elevator into the same shaft than any other manufacturer.



INCLINATOR.COM

300 Cab

Smooth hardwood panels with crown, chair, baseboard and picture molding make this our most popular cab style. And very customizable, as you can finish it to match the home's walls and architectural details.



INCLINATOR.COM

200 Cab

Smooth hardwood veneer panels with flush corners make this style ideal for more contemporary designs. Can be finished to match or complement the home's clean look and feel.



INCLINATOR.COM

100 Cab

Smooth MDF paintable walls with flush corners. White laminate ceiling.

150 Cab Available:

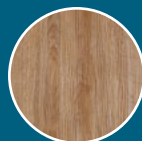
MDF raised panels (in 1-over-1 or 2-over-2 configuration) with paintable walls.

Floor

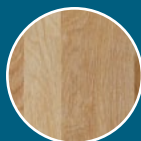
Inclinator elevators include commercial-grade laminate flooring with simulated wood grain finish and plank design. Unfinished oak can be used for custom, on-site finishing.

Ceiling

The elevator ceiling can be white laminate or any of the wall veneers or hardwoods (at left). 100 Cab in white laminate.



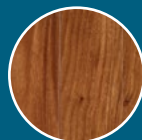
Maple
(Laminate)



Natural Oak
(Laminate)



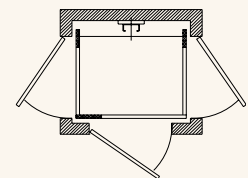
Unfinished
Oak



Cherry
(Laminate)



Walnut
(Laminate)



The elevator cab can have gate openings on 1, 2 or 3 sides. Inclinator offers 26 different cab configurations – far more than any other manufacturer.

Cab Operating Systems

Each elevator includes a Cab Operating Panel. The faceplate will vary depending on the number of elevator landings. Emergency light and bell are standard. A Hall Station is placed on each landing by the elevator door. All are available in one of three finishes.



Brushed
Stainless

Brushed
Brass

Oil Rubbed
Bronze

Flush Cab Operating Panel:

1-4 Landings: 4.125" (10.47 cm) x 20.25" (51.43 cm)

5-6 Landings: 4.125" (10.47 cm) x 24.75" (62.86 cm)

Raised Cab Operating Panel:

1-4 Landings: 4.75" (12.06 cm) x 21.06" (53.49 cm)

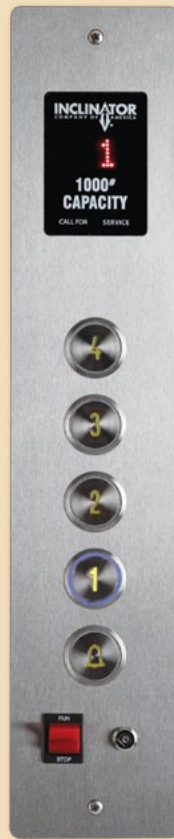
5-6 Landings: 4.75" (12.06 cm) x 24.75" (62.86 cm)

Flush Hall Station:

4.125" (10.47 cm) x 9.875" (25.08 cm)

Raised Hall Station:

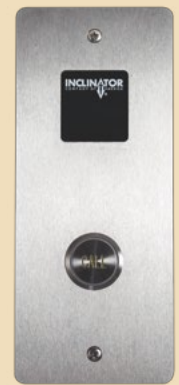
3.5" (8.89 cm) x 8.25" (20.95 cm)



Cab Operating Panel: Flush



Cab Operating Panel: Raised



Hall Station: Flush



Hall Station: Raised

Optional Phone

We offer a flush-mounted speaker phone with manual dialer and two-way conversation. Simply push the "on" button and dial the desired number. Analog telephone line is required. Available in one of three finishes.

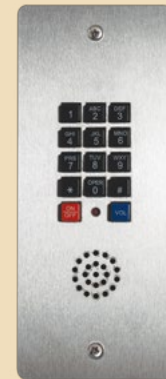
4.125" (10.47 cm) x 9.875" (25.08 cm)



Brushed
Stainless

Brushed
Brass

Oil Rubbed
Bronze



Lights

Elevator comes with two LED ceiling lights in one of two acrylic finishes shown. Lights illuminate when door opens and elevator is running.

3.5" (8.89 cm) Diameter Recessed Down Light with Three 1-Watt High-Power LEDs with Pivoting Center



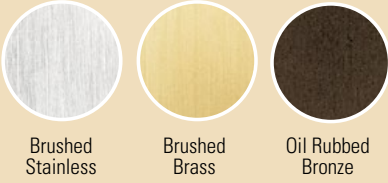
White



White & Oil Rubbed
Bronze

Handrail

One flat wood handrail, finished to match walls, is standard. Optional round metal handrail, in one of these finishes is available.



Brushed
Stainless

Brushed
Brass

Oil Rubbed
Bronze



Standard: Flat Wood Handrail



Optional: Round Metal Handrail

Gates

Elevator comes with a collapsible or accordion fold gate. Vinyl laminate panels are standard for accordion fold gate. Hardwood and acrylic panels are available. Automatic gate operator is available (accordion fold gate required). Extruded gate track matches metal finish on either gate option.



Accordion Gate



Collapsible Gate

Accordion Fold: Standard Vinyl Laminates



Maple/Birch

Light Oak

Dark Oak

Cherry

Mahogany

Walnut

White

Antique White

Chalk

Beige

Black

Accordion Fold: Optional Hardwood Finishes



Maple/Birch

Oak

Mahogany

Walnut

Cherry

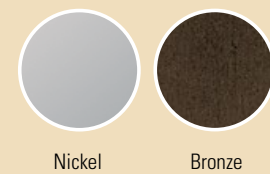
Accordion Fold: Optional Acrylic Vision Panels



Clear

Bronze (Tint)

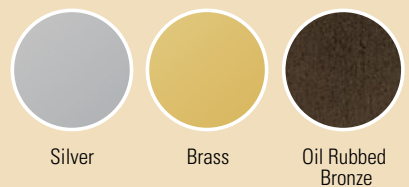
Accordion Fold: Gate Frames



Nickel

Bronze

Collapsible Gate: Metal Finishes



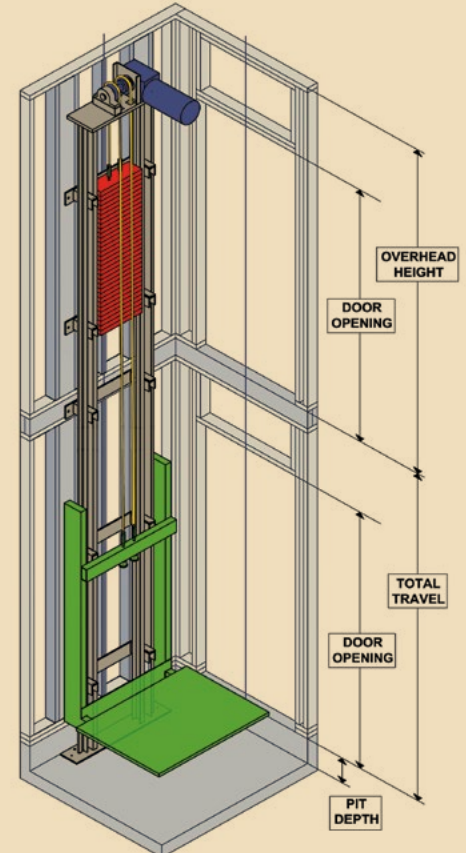
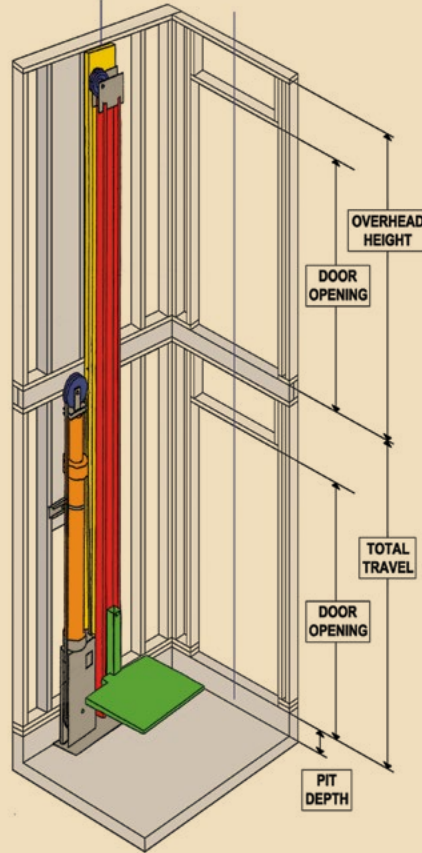
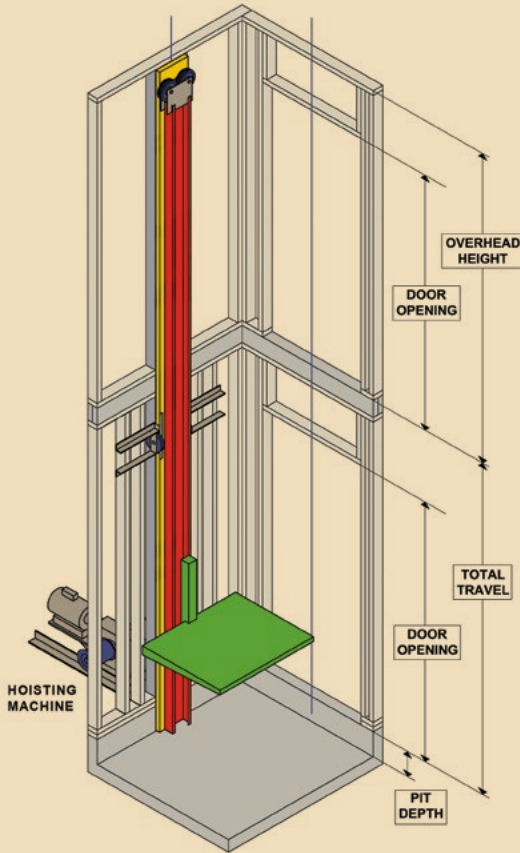
Silver

Brass

Oil Rubbed
Bronze

Drive Systems

Elevette® features four drive system types, including two machine room drives and two machine roomless drives.



Elevette® Cable Drum

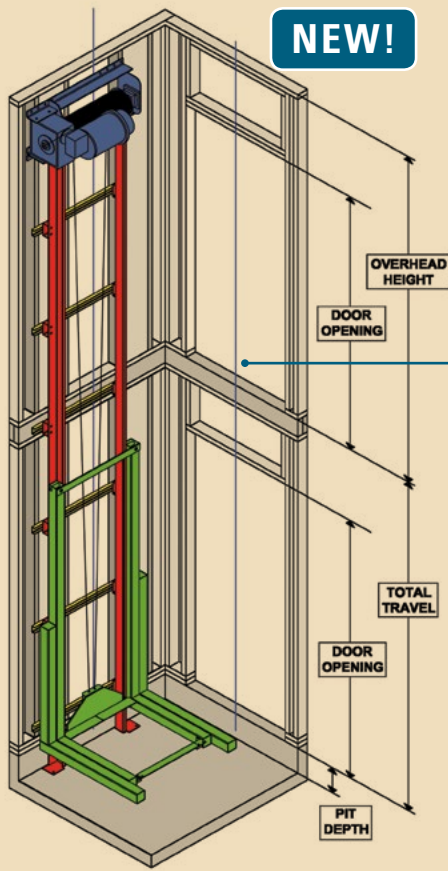
- The quietest cable drum home elevator in the industry
- Patented, space-saving monorail guiding system
- Proprietary Control System: serial communication, self-diagnostic microprocessor
- Drive system housed in machine room
- Can be used for in-shaft and no-shaft elevators
- For use with all Inclinator cab styles
- 1,000-lb. (453 kg) capacity with up to 18 sq. ft. (1.67 sq. meters) cab size – where allowed by code
- 500-lb. (226 kg) capacity with up to 15 sq. ft. (1.39 sq. meters) cab size – where allowed by code
- Up to 40 ft. (12.19 meters) per minute travel speed
- Travel up to 50 ft. (15.24 meters)
- Can accommodate up to 6 landings
- Emergency battery lowering
- Pre-wire package
- Cab gate & door safety devices
- Two Type A safety devices
- Overrun switch
- Slack cable disconnect

Elevette® Hydraulic

- Patented HydraRide system delivers a smooth ride and quiet operation
- Patented, space-saving monorail guiding system
- Proprietary Control System: serial communication, self-diagnostic microprocessor
- Drive system housed in machine room
- For in-shaft elevators only
- For use with all Inclinator cab styles
- 950-lb. (430 kg) capacity with up to 18 sq. ft. (1.67 sq. meters) cab size – where allowed by code
- Up to 40 ft. (12.19 meters) per minute travel speed
- Travel up to 50 ft. (15.24 meters)
- Can accommodate up to 6 landings
- Emergency battery lowering
- Pre-wire package
- Aluminum corrosion-resistant lightweight tank
- Power unit requires much less hydraulic fluid than other brands
- Cab gate & door safety devices
- Two Type A safety devices
- Overrun switch

Elevette® MRL Geared

- Machine roomless (MRL) drive system housed entirely in the shaftway using an efficient counterweight system with a geared motor
- Heavy-duty double rail chassis
- Proprietary Control System: serial communication, self-diagnostic microprocessor
- For in-shaft elevators only
- For use with all Inclinator cab styles
- 950-lb. (430 kg) capacity with up to 18 sq. ft. (1.67 sq. meters) cab size – where allowed by code
- Up to 40 ft. (12.19 meters) per minute travel speed
- Travel up to 60 ft. (18.28 meters) – where allowed
- Can accommodate up to 6 landings
- Featuring energy-efficient counterweight technology
- Emergency battery lowering
- Pre-wire package
- Homing device
- Cab gate & door safety devices
- Two Type A safety devices
- Overrun switch



Elevette® MRL Overhead Cable Drum

- Machine roomless (MRL) drive system housed entirely in the shaftway
- Two custom-formed guide rails for increased stability
- Proprietary Control System: serial communication, self-diagnostic microprocessor
- For in-shaft elevators only
- 1,000-lb. (453 kg) capacity with up to 18 sq. ft. (1.67 sq. meters) cab size - where allowed by code
- Our smoothest-riding MRL elevator system
- Up to 40 ft. (12.19 meters) per minute travel speed
- Travel distance up to 40 ft. (12.19 meters)
- Can accommodate up to 6 landings
- Emergency battery lowering
- Pre-wire package
- Homing device
- Cab gate & door safety devices
- Two Type A safety devices
- Overrun switch
- 3 hp motor

Industry-leading in so many ways.

Inclinor's Cable Drum drive system has long been known as the most reliable of its type in the industry. Now we've made the best Cable Drum drive even better by offering an overhead Cable Drum, saving space by eliminating the need for a machine room. This new MRL drive features:

- Flexible overhead requirements
 - The lowest overhead for any MRL overhead drive system in the industry
 - Overhead distance for a standard cab at 40 fpm is only 8'-8.25" (2.64 meters @ 12.19 m/min)
 - Overhead distance for a standard cab at 30 fpm is only 8'-5.25" (2.57 meters @ 9.14 m/min)
- The lowest minimum distance between floors – 12" (30.48 centimeters) – great for split level homes
- Pit depth of only 8" (20.32 centimeters)

We take great joy in knowing we've helped make your home even more special.

Whether you require assistance getting from floor to floor today or planning for future needs, you just want to add convenience for your multi-level home for yourself and others, or you are intrigued by the idea of having an elegant elevator in your home, let Inclinor help you enjoy the freedom of using your home to the fullest extent ... for a long time.



You can be confident in choosing an Inclinor product.



Home Elevators

From simple accessibility to distinctive elegance, Elevette® includes the most standard features and custom options. America's #1 brand.



Vertical Platform / Wheelchair Lifts

A great alternative to cumbersome ramps that take up so much space; for indoor and outdoor usage at homes and public buildings.



Dumbwaiters

Move things from floor to floor easily and safely; floor- or counter-loading models for homes and businesses.

Your home's design and accessorizing are a reflection of your personal style.

An Inclinor elevator – more than any other brand – can be designed and customized to reflect and enhance that style. Besides its beauty, Elevette's reliable components, quality construction and meticulous assembly provide dependable performance. Our certified dealers will ensure its value lasts for a very long time.

Call us to locate your nearest dealer, or go to our website – www.inclinor.com – and click on "locate an Inclinor dealer."



601 Gibson Boulevard, Harrisburg, PA 17104 USA
isales@inclinor.com

Toll-Free in USA: 800-343-9007 x289

International Sales: 717-939-8420 x252

www.inclinor.com



Consult your local building authorities for specific regulations on these products before purchasing. Specifications, material finishes and product options are subject to change without notice.

©2015, Inclinor Company of America | All Rights Reserved | INCMK60103 | SPCTM-5M-115